



# 潜水回流泵

## Submersible Reflux Pump



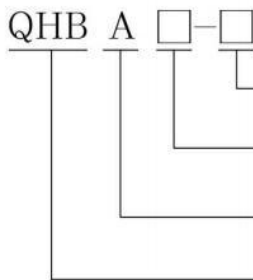
## QHB 型潜水回流泵 QHB Type Submersible Reflux Pump

### 产品使用范围 Scope of Product Application

QHB型系列潜水回流泵是在潜水搅拌机生产技术基础上开发出的产品，该泵为污水处理厂二级混合液回流、反硝化脱氮除氮的专用设备，并可用于地面给排水工程中需要微扬程、大流量场所。

The submersible reflux pump of QHB series is developed based on the production technique of submersible agitator. It is a special equipment for the reclamation of the mixed liquids, denitrification, denitridation and nitrogen removal in Class II sewage treatment plant as well as the environments that require short delivery lift and large discharge in the ground drainage projects.

### 产品型号说明 Type code



电机额定功率kW  
Rated power of motor KW  
公称直径  
Nominal diameter mm  
A为节能型 Y为永磁型  
A : energy-saving type Y : permanent magnet type  
潜水回流泵  
Submersible reflux pump



### 产品技术性能表 Table of Product Technical Performance

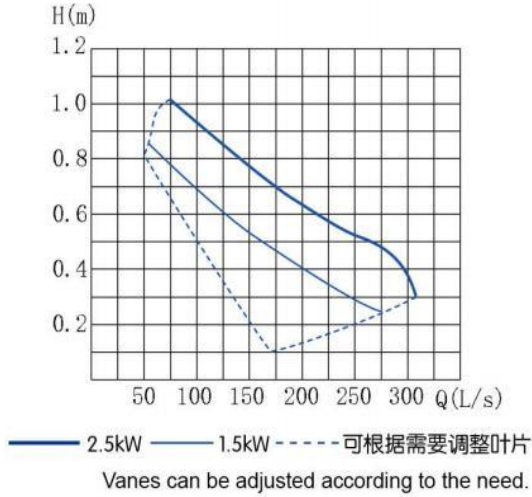
型号 Type	电机功率 Motor power (KW)	额定电流 Rated current (A)			叶轮直径 Impeller diameter(mm)	防护等级 Protective class	绝缘等级 Insulation class	管道公称直径 Nominal diameter DN
		QHB	QHBA	QHBY				
QHB400-1.5	1.5	5.2	3.7	-	400	IP68	F	400
QHB400-2.5	2.5	7	5.6	-	400	IP68	F	400
QHB400-3	3.0	8.6	6.6	-	400	IP68	F	400
QHB400-4	4.0	10.3	8.6	-	400	IP68	F	400
QHB600-4	4.0	14	8.6	7.8	620	IP68	F	600
QHB600-5	5.0	18.2	11	9.5	620	IP68	F	600
QHB600-7.5	7.5	28	15	12.4	620	IP68	F	600
QHB600-10	10	32	22	18	620	IP68	F	600
QHB600-15	15	39	30	25	620	IP68	F	600
QHB800-18.5	18.5	-	36	31	760	IP68	F	800
QHB800-22	22	7.8	43.2	36.5	760	IP68	F	800
QHB800-30	30	-	62	49	760	IP68	F	800
QHB800-37	37	-	74	62	760	IP68	F	800

## 性能曲线 Performance Curve

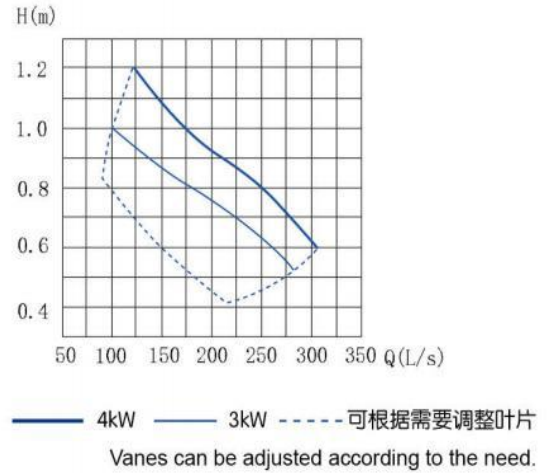
此曲线为泵的特性曲线，不包括扩散管和进出口的损失。

This curve indicates the features of the pump, excluding the loss of the diffusing tubes as well as the inlet and outlet.

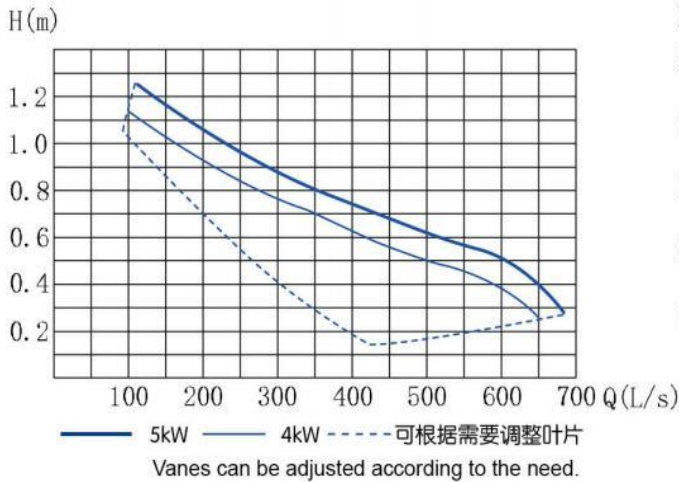
QHB400-1.5 QHB400-2.5



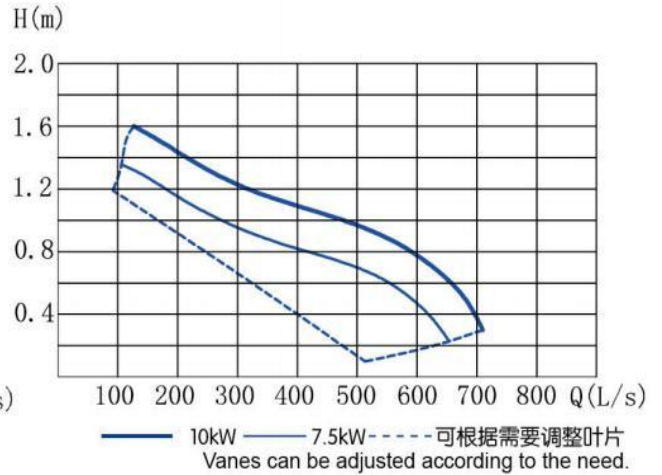
QHB400-3 QHB400-4



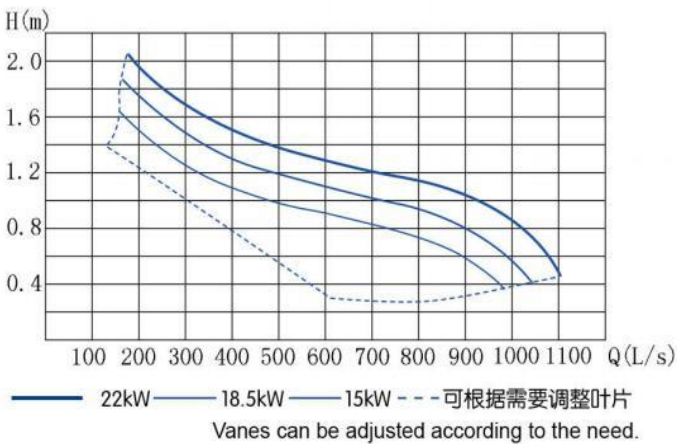
QHB600-4 QHB600-5



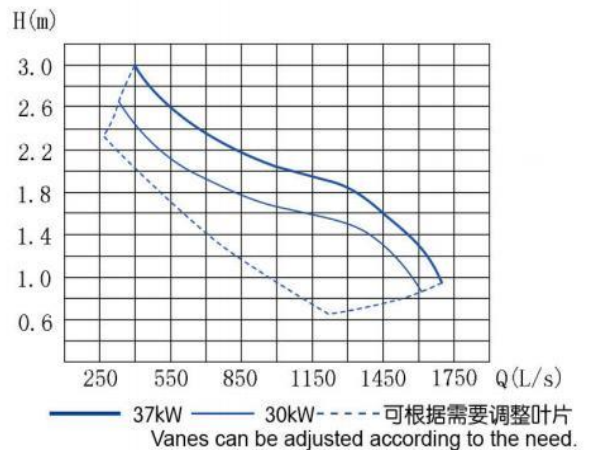
QHB600-7.5 QHB600-10



QHB600-15 QHB740-18.5 QHB740-22



QHB740-30 QHB740-37





## 产品安装 Product Installation

特别提醒用户:正确安装使用是该泵长久、正常运转的基本保证。

潜水回流泵采用自动耦合安装系统,在无需排水的情况下,不用任何机械拆卸便可迅速提升,安装方便快捷。

本设备除穿墙管需预埋外,导杆、起吊杆均用膨胀螺栓与池体连接,不需预埋件。

预埋件和拍门由用户自行采购安装,回流泵有水平安装和垂直安装两种方式供用户选择。



### Special Warning to the Users:

Correct installation and usage is a basic guarantee for long-term and normal operation of the pump.

Submersible reflux pump employs automatic coupling installation system which can be quickly lifted without any mechanical dismantling, is very convenient and facile.

Except the wall-threading pipe need to be pre-embedded, the guide rod and lifting rod will connect with the pond wall by expansion bolts, no need for any pre-embedded parts. Pre-embedded parts and flap valve shall be purchased and installed by the users. The user can optionally select The reflux pump horizontal installation or vertical installation.

## 安装尺寸 Installation dimensions

型号T 参数P	d1	d2	D	DN	L	h1	h2	a	B	L1		
QHB400-1.5	407	480	600	400	605	1200	350	70	≥ 300	由用户确定 To be decided by the users.		
QHB400-2.5	407	480	600	400	660	1200	350	70				
QHB400-3	407	480	600	400	705	1200	350	70				
QHB400-4	407	480	600	400	705	1200	350	70				
QHB600-4	632	710	800	600	920	1500	550	100	≥ 400		由用户确定 To be decided by the users.	
QHB600-5	632	710	800	600	920	1500	550	100				
QHB600-7.5	632	710	800	600	1000	1800	550	100				
QHB600-10	632	710	800	600	1000	1800	550	100				
QHB600-15	632	710	800	600	1110	1800	550	100	≥ 500			由用户确定 To be decided by the users.
QHB740-18.5	832	975	980	800	1290	2500	600	100				
QHB740-22	832	975	980	800	1290	2500	600	100				
QHB740-30	832	975	980	800	1175	2500	600	100				
QHB740-37	832	975	980	800	1175	2500	600	100				

## 产品特点 Product Characteristics

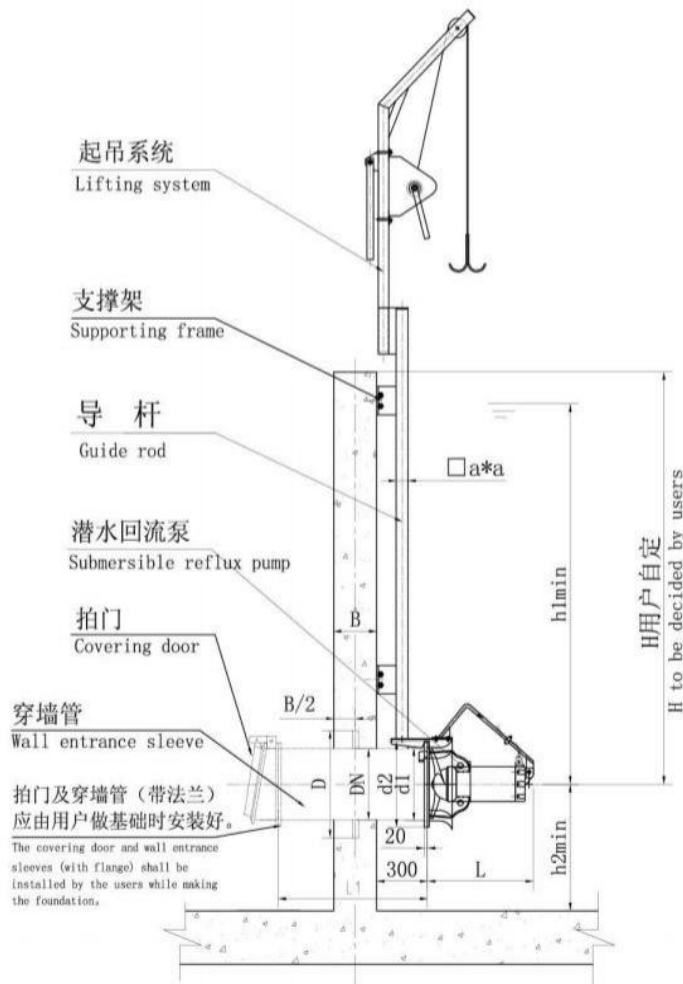
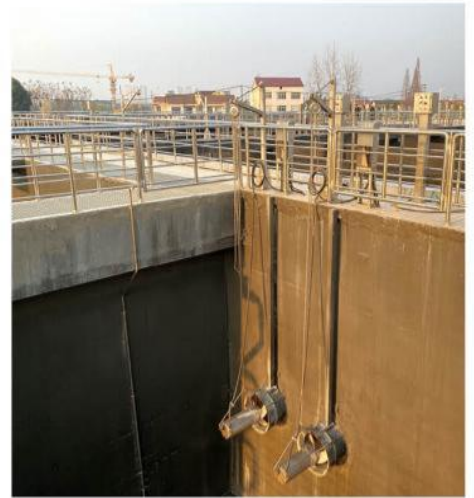
1. 按照微扬程、大流量的工作模式特别设计
2. 主机采用冲压成型结构，水力性能好，效率高
3. 一体化吊装设计，可实现在水下快速安装
4. 采用双重机械密封和多重电机保护功能，提高运行可靠性。

1.Special design according to the operating mode of short lift and large discharge.

2.The main equipment employs punching structure resulting in good hydraulic performance and high efficiency.

3.The integrated lift design can realize the quick installation underwater.

4.Make use of dual mechanical sealing and multiple electro-mechanical protective function to improve the operating reliability.



安装示意图

## 产品使用条件 Product Usage Conditions

- 1、连续运行时，介质温度不高于40℃；
  - 2、介质PH值为5-9；
  - 3、最大潜没深度10m。
- 1、 The temperature of the medium shall not be higher than 40℃ during the continuous operation.
  - 2、 The pH value of the medium shall be 5~9
  - 3、 The maximum depth of submersion shall be 1 0m.





地址：南京六合经济开发区时代大道 69 号  
Add: No.69 Shidai Avenue, Luhe Economic Development  
Zone, Nanjing, P.R.China  
电话 Tel: +86 25 57139086 86661665 57138396(总机)  
传真 Fax: +86 25 57139096 86669839  
[http:www.njbeite.com](http://www.njbeite.com)  
E-mail:Beite@njbeite.com